

Contractor Series

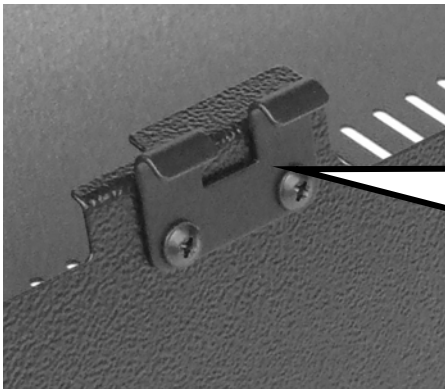
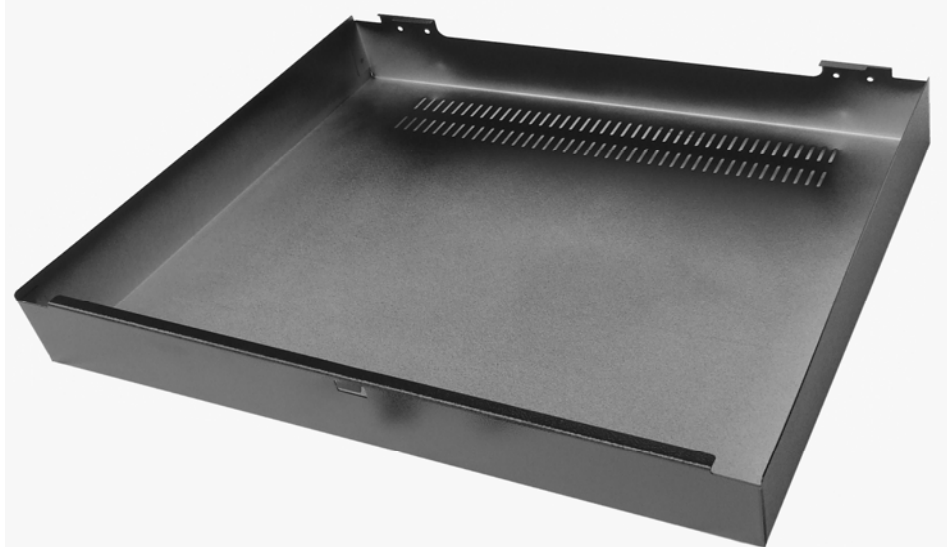
CR-TOP

SECURITY COVER FOR C10U, CR12 & CR16 RETRO FITTING INSTRUCTIONS

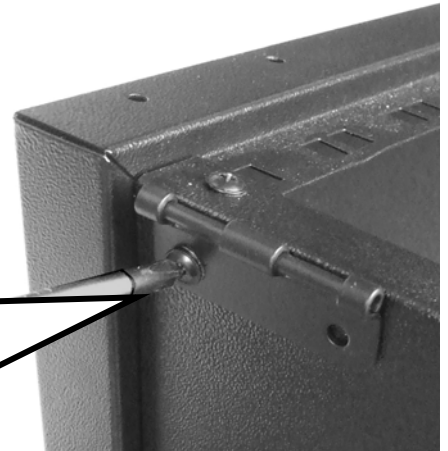


Your CR Cover kit has:-

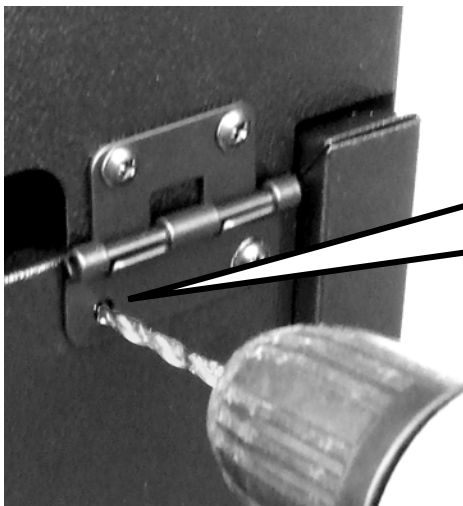
- 1 x CR-Top Cover
- 2 x Black Lift off Hinges
- 1 x Lockable Butterfly Catch
- 8 - M4 x 12mm screws
- 8 - M4 x Serrated Nuts



1st Fit the hook parts of both hinges to the cover as shown
DO NOT FULLY TIGHTEN

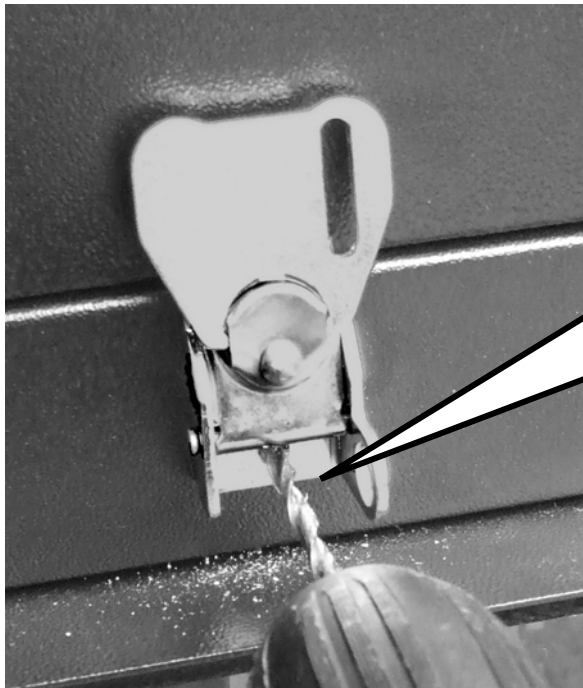


Then using the 2 existing rear rack screws fit the 2nd part of each hinge
DO NOT FULLY TIGHTEN



Now fit the top onto the rack and make the 2nd fixing hole for each hinge using a 5mm drill as shown

Once the top has been fitted and aligned - **FULLY TIGHTEN ALL THE SCREWS**

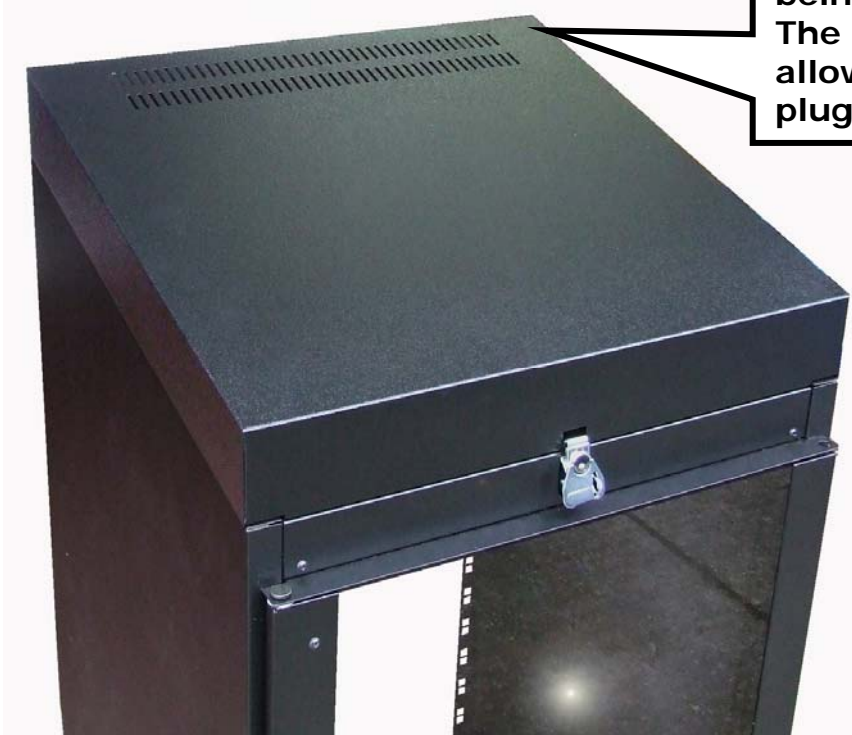


Leaving the butterfly catch in the locked position, fit it over the front capture point & then position the tab to expose the bottom fixing hole. Holding the catch and top firmly in place drill the bottom fixing point with a 5mm Drill as shown



After affixing the catch firmly in position, remove the top and drill the 2nd mounting hole. Then secure with the remaining nut & screw

This cover has been designed to stop un-attended equipment being tampered with. The headroom and rear slot allows for hook up cables & plugs to remain connected.



The use of a small good quality padlock through the butterfly catch hasp is recommended

Rackz
Limited